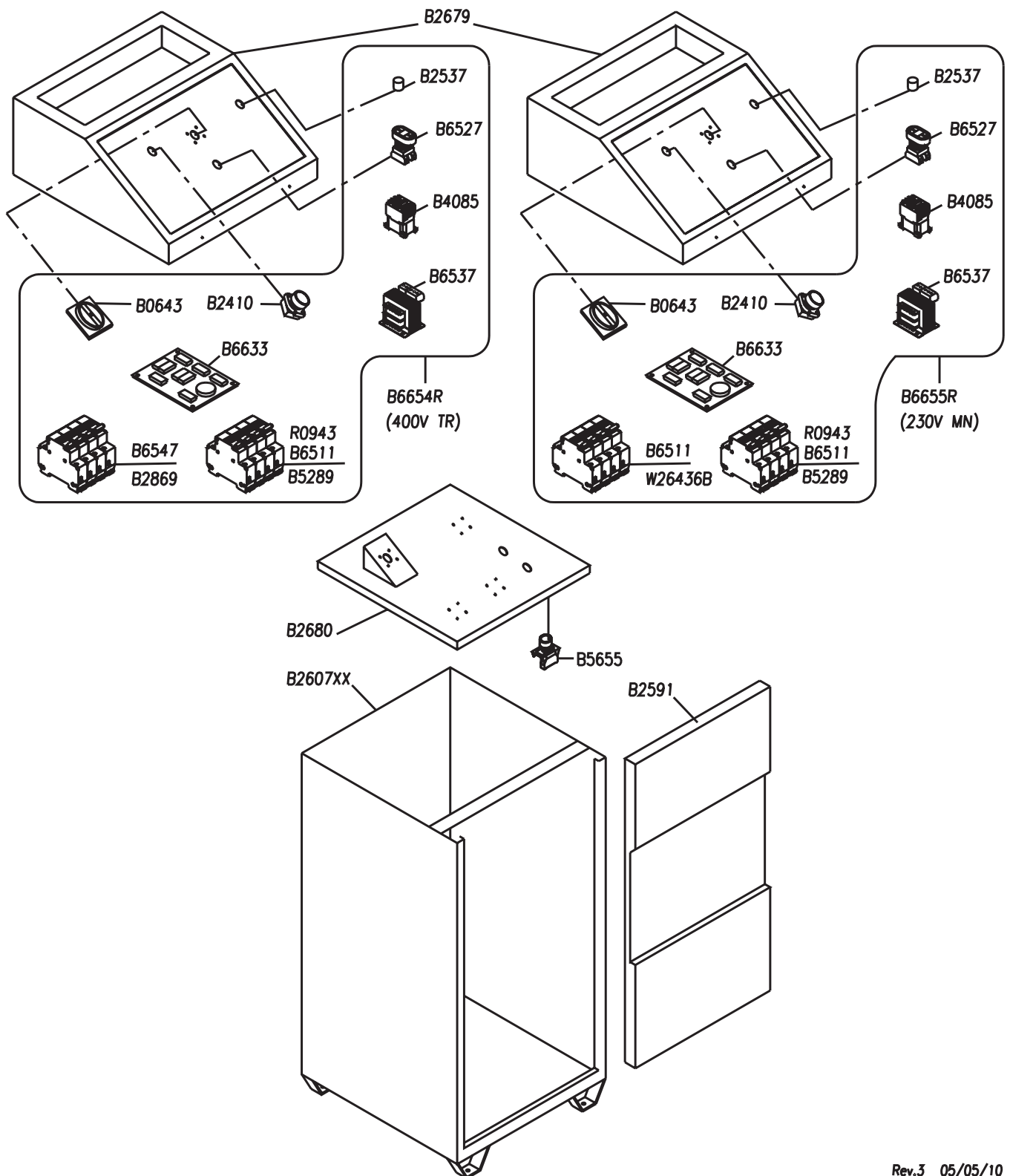




# MANÖVERSKÅPET

CONTROL BOX  
TABLEAU DE COMMANDE

STEUERTAFEL  
PANEL DE MANDO



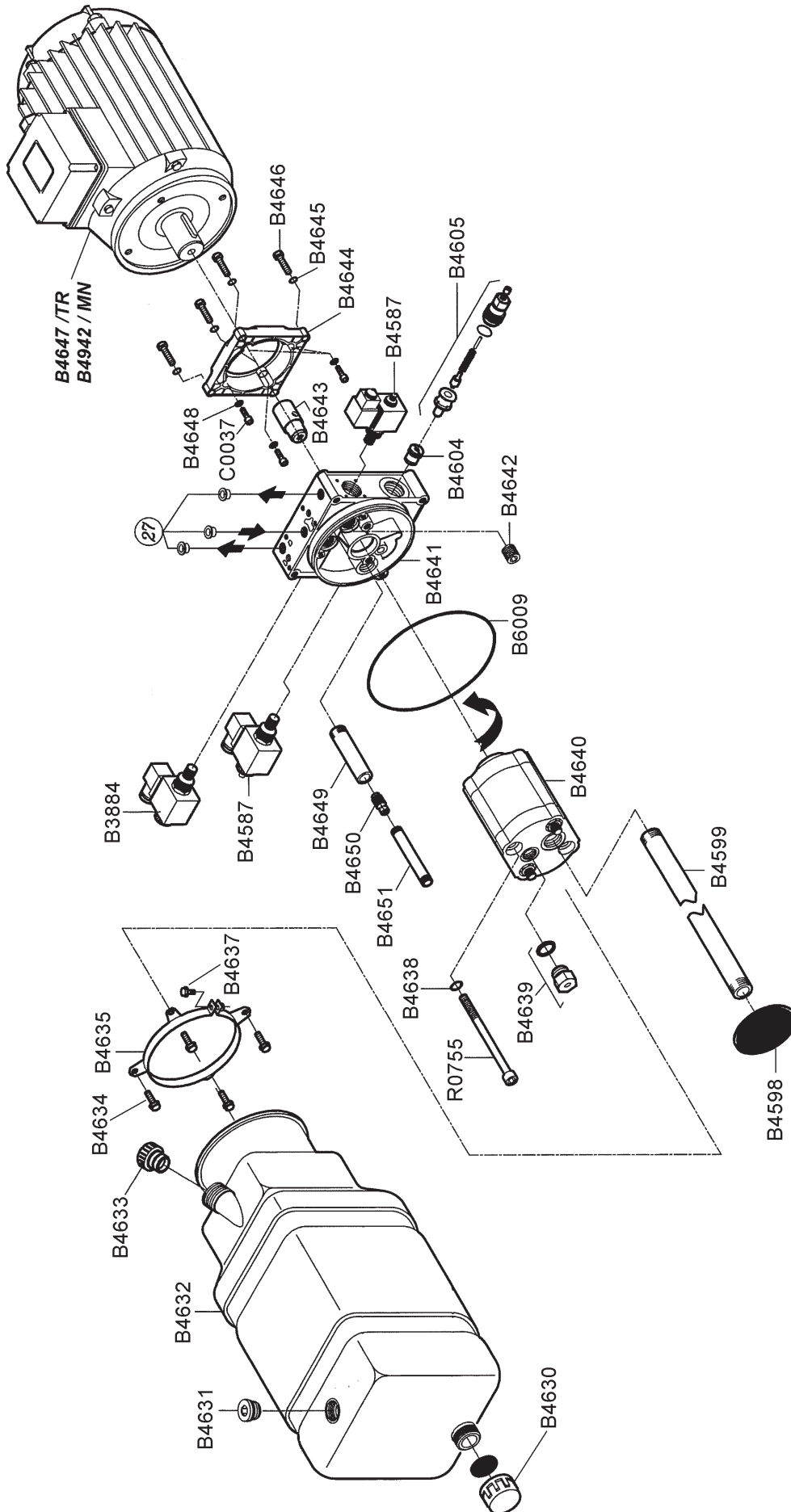
# HYDRAULENHET

OLEODYNAMIC CONTROL UNIT

HYDRAULIKEINHEIT

CENTRALE HYDRAULIQUE

CENTRALITA HIDRAULICA



Part Code	Sugg	Descrizione	Description	Beschreibung	Description	Denominacion
A0231		DADO ALTO M10 6S UNI 5587 ZB	NUT M10	MUTTER M10	ECROU HAUT M10 6S UNI 5587 ZB	TUERCA ALTA M10 ZINCADA
A0322		RACCORDO A "T" G1/8" TUBO D.8	T CONNECTION G1/8" TUBE D.8	"T" ANSCHLUSSKEGEL G1/8" ROHR D.8	RACCORD EN T G1/8" POUR TUYAU D.8	UNIÓN "T" G 1/8" - TUBO Ø8
A0400		SEEGER E20 UNI 7435	SNAP RING E20 UNI 7435	SEEGER-RING E20 UNI 7435	CIRCLIPS E 20 UNI 7435	SEEGER E20 UNI 7435
A0444		SEEGER E25 UNI 7435	SEEGER E25 UNI 7435	SEEGER E25 UNI 7435	ANNEAU ÉLASTIQUE ØE 25	ARO ELÁSTICO ØE 25
B0643	*	INTERRUPTORE GENERALE 230/400	MASTER SWITCH 230/400	SCHALTER 230/400	INTERRUPTEUR GÉNÉRAL	INTERRUPTOR GENERAL
B2410	*	LAMPADA BIANCA 24V MIM25	WHITE LAMP 24V	KONTROLLEUCHEITE 24V	LAMPE POUR VOYANT LUMINEUX 24V	LAMPARA DE SEÑALIZACION 24V
B2537		BUZER 24VAC	BUZER 24VAC	BUZER 24VAC	BUZER 24VAC	BUZER 24VAC
B2591		SPORTELLO ANTERIORE ARMADIO	CABINET FRONT DOOR	VORDERE SCHRANKTÜR	VOLET ANTERIEUR ARMOIRE	PUERTA ANTERIOR ARMARIO
B2607XX		ARMADIETTO	CABINET	SCHRANK	ARMOIRE	CAJÓN
B2679		PLANCIA COMANDO CENTRALINE '10	CONTROL PANEL	INSTRUMENTENTAFEL	PANNEAU FRONTAL	TABLERO DE MANDOS
B2680		SUPPORTO COMP.ELETTTR.CENTR.'10	SUPPORT ELECTRICAL COMPONENTS	UNTERSTÜTZUNG ELEKTRISCHEN KOMPONENTEN	SOUTIEN COMPOSANTS ÉLECTRIQUES	APOYO COMPONENTES ELÉCTRICOS
B2869	*	FUSIBILE 10X38 10A	FUSE 10X38 10A	SCHMELZSICHERUNG 10X38 10A	FUSIBLE 10X38 10A	FUSIBLE
B3081		NIPPLA M-M 1/4 IDRAULICA	1/4" NIPPLES	DOPPEL GEWINDENIPPEL 1/4"	NIPPLE 1/4"	NIPLE M-M 1/4 HIDRAULICA
B3290		PRULUNGA MF 1/4"	EXTENSION MF 1/4	VERLÄNGERUNG MF 1/4"	PROLONGATION MF 1/4"	EXTENSIÓN MF 1/4"
B3884	*	ELETTROVALVOLA DOPPIA TENIUTA PG	ELECTRO-VALVE	ELEKTROVENTIL	ELECTROVANNE	ELECTROVÁLVULA
B4085		TELERUTTORE NO-4KW 24VCC MIG SAT145	CONTACTOR	FERNSCHALTER	TÉLÉRUPTEUR	CONTACTO
B4332		BOCCOLA AUTOLUBRIFICANTE 25X28X25	SELF-LUBRIFICATING BUSHING 25X28X25	SELBSTSCHMIERENDE BUCHSE 25X28X25	DOUILLE 25X28X25	CASQUILLO AUTOLUBRIC. DIAM. 25X28X25
B4333		BOCCOLA AUTOLUBRIFICANTE 25X28X20	SELF-LUBRIFICATING BUSHING 25X28X20	SELBSTSCHMIERENDE BUCHSE 25X28X20	DOUILLE 25X28X20	CASQUILLO AUTOLUBRIC. DIAM. 25X28X20
B4346		GHIERA AUTOBLOCCANTE M20X1X13	RING NUT	NUTMUTTE M20X1X13	BAGUE AUTOBLOQUANTE	VIROLA AUTOBLOQUEANTE
B4500XX		LEVA AUSILIARIA STR.SR.AN.S.	SHORT ARM	HEBEL	LEVIER COURTE	PALANCA CORTA
B4502XX		LEVA SUPERESTERNA STR.SR.AN.S	UPPER OUTSIDE ARM	OBERER AEUSSERER HEBEL	LEVIER SUPERIEUR EXTERNE	PALANCA SUP. EXT.
B4508		CARTER INFERIORE SX PASSAGGIO TUBI	LOWER GUARD SX	UNTERE GEHÄUSE SX	CARTER INFÉRIEUR SX	CÁRTER INFERIOR SX
B4509		CARTER CENTRALE PASSAGGIO TUBI	LOWER GUARD	UNTERE GEHÄUSE	CARTER INFÉRIEUR	CÁRTER INFERIOR
B4510		CARTER INFERIORE DX PASSAGGIO TUBI	LOWER GUARD DX	UNTERE GEHÄUSE DX	CARTER INFÉRIEUR DX	CÁRTER INFERIOR DX
B4511	*	PATTINO SUPERIORE ST.SR	UPPER SLIDE PAD	OBERER GLEITER	PATIN SUPERIEUR	PATÍN SUPERIOR
B4512	*	PATTINO INFERIORE ST.SR	LOWER SLIDE PAD	UNTERER GLEITER	PATIN INFÉRIEUR	PATÍN INFERIOR
B4513		PERNO FULC.INT.LEVE SUP SR ZB	UPPER ARMS PIN	BOLZEN OBERER AEUSSERER HEBEL	AXE INTERNE BRAS CISEAUX	PERNO PALANCAS SUP.
B4514		PERNO FULC.ESTR.LEVE EST SR ZB	EXTERNAL ARMS PIN	BOLZEN UNTERER HEBEL	AXE LEVIER EXTERNE	PERNO PALANCAS EXT.
B4515		PERNO FULC.ESTR.LEVE INT SR ZB	INTERNAL ARMS PIN	BOLZEN INNERER HEBEL	AXE LEVIER INTERNE	PERNO PALANCAS INT.
B4516		PERNO ATTACCO CUL.CILIN. SR ZB	INTERNAL LOWER ARM CYLINDER PIN	BOLZEN ZILINDER	AXE VERIN LEVIER INF-INT.	PERNO CILINDRO PALANCA INF-INT.

B4517	PERNO ATTACCO STELO CIL. SR ZB	ROD-CYLINDER PIN	BOLZEN FUER ZYLINDERSCHAFT	AXE TIGE-VERIN	PERNO VASTAGO-CILINDRO
B4519	PERNO RULLO SPINTA STRAT.SR ZB	ROLLER PIN	BOLZEN ROLLE	AXE GALET POUSSOIR	PERNO RODILLO DE EMPUJE
B4520	RULLO SPINTA STRATOS SR ZB	ROLLER	ROLLE	ROULEAU	RODILLO DEMPUIJE
B4523	PERNO FULC.INT.LEVE INF.SR ZB	DOWNER ARMS PIN	BOLZEN UNTERER INNERER HEBEL	AXE LEVIER INFERIEUR	PERNO PALANCAS
B4524	PERNO ATTACCO LEVA BASE SR ZB	PIN FOR LOWER INSIDE ARM	BOLZEN HEBEL UNTERER	AXE LEVIER INFERIEUR INTERNE	PERNO PALANCA INF. INT.
B4525XX	BLOCCO RAMPA DX STR.SR AN.S.	RIGHT STRUT	STREBE RS	POUSSARD DROITE	POSTE DE SECURIDAD
B4526XX	BLOCCO RAMPA SX STR.SR AN.S.	LEFT STRUT	STREBE LS	POUSSARD GAUCHE	POSTE DE SECURIDAD
B4527XX	RAMPA SX STRATOS SR AN.S.	RAMP SX	RAMPE SX	RAMPE SX	RAMPA SX
B4528XX	RAMPA DX STRATOS SR AN.S.	RAMP DX	RAMPE DX	RAMPE DX	RAMPA DX
B4529	PERNO RAMPA STRATOS SR ZB	PIN	STIFT	AXE	PERNO
B4530	RULLO RAMPA STRATOS SR ZB	BALANCE RAMP ROLLER	FUEHRUNGSBUCHSE	ROULEAU RAMPE BASCULANTE	RODILLO RAMPA BASCULANTE
B4536XX	KIT RAMPA BASCULA.DX S.SR.VER	KIT BALANCE RAMP DX	AUFFAHR RAMPE DX	KIT RAMPE BASCULANTE DX	KIT RAMPA BASCULANTE DER
B4537XX	KIT RAMPA BASCULA.SX S.SR.VERN	KIT BALANCE RAMP SX	AUFFAHR RAMPE SX	KIT RAMPE BASCULANTE SX	KIT RAMPA BASCULANTE SX
B4538	PERNO ATTAC.LEVA SUP.INT.SR ZB	PIN FOR UPPER INSIDE ARM	BOLZEN HEBEL AEUSSERER	AXE LEVIER SUPERIEUR INTERNE	PERNO PALANCA SUP. INT.
B4544	OCCHIO 1/4-FILETTO M 1/4 SR	FITTING M1/4	AUF/ABSTIEGSREGLER M1/4	RACCORD M1/4	CONEXION M1/4
B4545	TAPPO F OGIVA 1/4 SR	PLUG M1/4	DECKEL M1/4	BOUCHON M1/4	TAPON M1/4
B4546	BOCCOLA AUTOLUBR.20X23X15 S.SR	SELF-LUBRIFICATING BUSHING 20X23X15 S.SR	SELBSTSCHMIERENDE BUCHSE 20X23X15 S.SR	DOUILLE AUTOLUBRIFIANTE 20X23X15 S.SR	CASQUILLO AUTOLUBRIC. DIAM. 20X23X15 S.SR
B4547	BOCCOLA AUT.FLAN.25X28X21,5 SR	SELF-LUBRIFICATING BUSHING 5X28X21,5 SR	SELBSTSCHMIERENDE BUCHSE 5X28X21,5 SR	DOUILLE AUTOLUBRIFIANTE 5X28X21,5 SR	CASQUILLO AUTOLUBRIC. DIAM. 5X28X21,5 SR
B4570	CARTER SUPERIORE PAVIMENTO	UPPER CASING	OBERSER GEHÄU	CARTER SUPERIEUR	PROTECCION SUPERIOR
B4572	COPRITUBO LATERALE PAVIMENTO	LATERAL PIPE COVER	SEITLICHE ROHR-ABDECKUNG	COUVERTURE LATÉRALE DE PIPE	CUBIERTA LATERAL DE LA PIPA
B4587	* ELETTROVALVOLA NC DISCESA 24VDC	DOWN ELECTRO-VALVE	ELEKTROMAGNETVENTIL „ ABSENKEN „	ELECTROVANNE DE DESCENTE	ELECTROVALVULA DE DESCENSO
B4592	* KIT GUARNIZIONI CILINDRO P1	GASKETS KIT	DICHTUNGSSATZ	JEU DE JOINTS	JUEGO DE JUNTAS
B4593	* KIT GUARNIZIONI CILINDRO P2	GASKETS KIT	DICHTUNGSSATZ	JEU DE JOINTS	JUEGO DE JUNTAS
B4598	FILTRO A CAMPANA D80 3/8" 90MC	FILTER	FLACHFILTER	FILTRE	FILTRO
B4599	TUBO POLIPROPILENE L=185 3/8"	PIPE	HOCHDRUCKSCHLAUCH	FLEXIBLE	TUBO
B4604	* VALVOLA DI RITEGNO A SFERA 3/8	CHECK VALVE	RUECKSCHLAGVENTIL	CLAPET ANTI-RETOUR	VALVULA DE NO RETROCESO
B4605	* VALVOLA MAX 280BAR	MAX. PRESSURE VALVE 280 BAR	UEBERDRUCKVENTIL 280 BAR	CLAPET DE PRESSION MAX.280 BAR	VALVULA DE MAXIMA PRESION 280 BAR
B4610	SUPPORTO MICRO	LIMIT SWITCHES SUPPORT	HALTER	SUPPORT	SOPORTE
B4611XX	BASE	BASE	GRUNDLAGE	CHÂSSIS	BASE
B4612XX	PEDANA SUPERIORE	UPPER PLATFORM	AUFNAHMEPLATTFORM	PLATE-FORME SUPERIEURE	PLATAFORMA SUPERIOR
B4613XX	LEVA INFERIORE INTERNA	LOWER INSIDE ARM	UNTERER INNERER HEBEL	LEVIER INFERIEUR INTERNE	PALANCA INF. INT.
B4614XX	LEVA INFERIORE ESTERNA	LOWER OUTSIDE ARM	UNTERER AEUSSERER HEBEL	LEVIER INFERIEUR EXTERNE	PALANCA INF. EXT.
B4628	CAMMA-AZIONA MICRO ST.SRM ZB	CAM	NOCKE	CAME	EXCENTRICA
B4630	TAPPO F 3/4" PCV	PLUG	STÖPSEL	BOUCHON	TAPÓN
B4631	TAPPO CHIUS.M1/4+GUARNIZ.	PLUG	DECKEL	BOUCHON	TAPÓN

B4632		SERBATOIO L7 PVC CORTO TP3	TANK	BEÄHELTER	RÉSERVOIR	DEPÓSITO
B4633		TAPPO SFIATO PRESSIONE	BLEED PLUG	ENTLUEFTUNGSDECKEL	BOUCHON RENIFLAR	TAPON DE ESCAPE
B4634		VITE TEF M6X14 DIN 6921 ZB	SCREW TEF M6X14 DIN 6921 ZB	SCHRAUBE TEF M6X14 DIN 6921 ZB	VIS TEF M6X14 DIN 6921 ZB	TORNILLO TEF M6X14 DIN 6921 ZB
B4635		FASCETTA SERBATOIO PVC	PLASTIC CLAMP	SCELLE	COLLIER PLASTIQUE	ABRAZADERA PLÁSTICO
B4637		VITE TEF M6X20 DIN 6921 ZB	SCREW TEF M6X20 DIN 6921 ZB	SCHRAUBE TEF M6X20 DIN 6921 ZB	VIS TEF M6X20 DIN 6921 ZB	TORNILLO TEF M6X20 DIN 6921 ZB
B4638		RONDELLA ZIGRINATA 6.4X13X.8	WASHER 6.4X13X.8	SCHEIBE 6.4X13X.8	RONDELLE 6.4X13X.8	ARANDELA 6.4X13X.8
B4639		VALVOLA DI SFIATO 1/4"	VALVE	VENTIL	CLAPET	VÁLVULA
B4640		POMPA GR.1 2.6CC	PUMP GR.1 2.6CC	PUMPENSET GR.1 2.6CC	POMPE GR.1 2.6CC	BOMBA GR.1 2.6CC
B4641		CORPO G 4 CAVE	BODY	KÖRPER	CORP	CUERPO
B4642		GRANO 1/4 DIN 906 CON.ES.INCAS	SCREW 1/4 DIN 906	DORN 1/4 DIN 906	GRAIN 1/4 DIN 906	GRANO 1/4 DIN 906
B4643		GIUNTO 19Z6 GR.80 TP3	CONNECTING 19Z6 GR.80 TP3	FEDERANSCHLUSS 19Z6 GR.80 TP3	ACCOUPLMENT 19Z6 GR.80 TP3	ACOPLAMIENTO DE OREJA 19Z6 GR.80 TP3
B4644		FLANGIA PVC GR80 TP3	FLANGE	FLANSCH	BRIDE	BRIDA
B4645		RONDELLA ZIGRINATA 8.4X13X.8	WASHER 8.4X13X.8	SCHEIBE 8.4X13X.8	RONDELLE 8.4X13X.8	ARANDELA 8.4X13X.8
B4646		VITE TE M8X25 ISO 4017 ZB	SCREW TE M8X25 ISO 4017 ZB	SECHSKANTSCHRAUBE TE M8X25 ISO 4017 ZB	VIS TE M8X25 ISO 4017 ZB	TORNILLO TE M8X25 ISO 4017 ZB
B4647	*	MOTORE G80 230-400/50T 2,2KW	ELECTRIC MOTOR G80 230-400/50T 2,2KW	ELEKTRO-MOTOR G80 230-400/50T 2,2KW	MOTEUR ÉLECTRIQUE G80 230-400/50T 2,2KW	MOTOR ELÉCTRICO G80 230-400/50T 2,2KW
B4648		RONDELLA ZIGRINATA 6.4X10X.7	WASHER 6.4X10X.7	SCHEIBE 6.4X10X.7	RONDELLE 6.4X10X.7	ARANDELA 6.4X10X.7
B4649		TUBO G3/8" VSC04	HOSE	SCHLAUCH	TUYAU	TUBO
B4650		VALVOLA CONTROL.DISC.1/4 LT5,5	VALVE 1/4 LT5,5	DURCH FLUSSREGLER VENTIL 1/4 LT5,5	SOUPAPE DE RÉGULATION 1/4 LT5,5	VÁLVULA DE REGULACIÓN DE PRESIÓN DE FUNCIONAMIENTO 1/4 LT5,5
B4651		TUBO SCARICO PVC 1/4 L=55	DISCHARGE PIPE	ABLASS-SCHLAUCH	TUYAU	TUBO DE DESCARGA
B4658		CILINDRO P1 DI 70 SRM-FR	CYLINDER P1F	ZYLINDER P1F	VERIN P1F	CILINDRO P1F
B4659		CILINDRO P2 DI 60 SRM	CYLINDER P2	ZILINDER P2	VERIN P2	CILINDRO P2
B4662		TUBO "C"	PIPE "C"	HOCHDRUCKSCHLAUCH "C"	FLEXIBLE "C"	TUBO "C"
B4663		TUBO "D"	PIPE "D"	HOCHDRUCKSCHLAUCH "D"	FLEXIBLE "D"	TUBO "D"
B4669		GRANO REGIST.CIL.P1 FREN.SRM	DOWEL	STIFT	GRAIN	ESPIGA
B4698	*	MICROINTERRUTTORE SIC.FF4531-10,5DN	MICRO SWITCH	MIKROSCHALTER	MICROINTERRUPTEUR	MICROINTERRUPTOR
B4941		TUBO "A"	PIPE "A"	HOCHDRUCKSCHLAUCH "A"	FLEXIBLE "A"	TUBO "A"
B4942	*	MOTORE B14 MN 230V 50HZ 2,2KW-K3	MOTOR B14 SINGLE PHASE 230V 50HZ 2,2KW-K3	ELEKTRO-MOTOR B14 230/50M 2,2KW	MOTOR B14 230/50M 2,2KW	MOTOR ELÉCTRICO 230/50M 2,2KW
B4966XX		LEVA SUPER.INTERNA STR.SR.AN.S	UPPER INSIDE ARM	OBERER INNERER HEBEL	LEVIER SUPERIEUR INTERNE	PALANCA SUP. INT.
B5053	*	VITE FORATA 1/4	SCREW 1/4	SCHRAUBE 1/4"	BOUCHON RENIFLARD 1/4"	TORNILLO CON ORIFICIO 1/4"
B5289	*	FUSIBILE 10X38 1A AM	FUSE 10X38 1A AM	SCHMELZSICHERUNG 10X38 1A AM	FUSIBLE 10X38 1A AM	FUSIBLE 10X38 1A AM
B5599		PERNO FULCRO LEVA AUSIL. SR ZB	PIN	BOLZEN	AXE	PERNO
B5655	*	PULSANTE NERO + 2 ELEM. CONT. N.O.	BLACK PUSH-BUTTON + 2 N.O. CONTACTS	DRUCKKNOPF	BOULTON	PULSADOR
B6009		O'RING 4450	O'RING	O'RING	JOINT TORIQUE	EMPAQUE

B6511		PORTAFUSIBILE 10X38 WIMEX PCH1	FUSE HOUSING 10X38 WIMEX PCH10X38	SCHMELZSICHERUNGHALTER	PORTE-FUSIBILE 10X38 WIMEX PCH 10X38	PORTAFUSIBILES 10X38 WIMEX PCH1
B6527	*	PULSANTE DOPPIO+ELEMENTO DI CONTATTO	TWIN PUSH BUTTON WITH CONTACT	DOPPLER KNOPF+KONTAKTGEBER TYP ERSCE 50052+52080	POUSSOIR DOUBLE ERSCE 50052+52080	PULSADOR DOBLE CON CONTACTO TIPO ERSCE 50052+52080
B6537	*	TRASFORMATORE 0-220-380 0-24V 50VA +/-10%	TRANSFORMER 0-230-400 0-24V 50VA	TRANSFORMATOR 0-220-380 0-24V 50VA +/-10%	TRANSFORMATEUR 0-220-380 0-24V 50VA +/-10%	TRANSFORMADOR 0-220-380 0-24V 50VA +/-10%
B6547		PORTAFUSIBILE TRIPOLARE 10X38	FUSE HOUSING	SICHERUNGSHALTER	PORTE-FUSIBILE	PORTAFUSIBILE
B6633		SCHEDA ELEK20 262-SRM+S39-PCB	ELECTRIC BOARD	ELEKTROKARTE	CARTE ELECTRIQUE	PLACA ELECTRONICA
B6654R		QUADRO 400/50T STR.SRM/09	ELECTRIC BOX ASSEMBLY THREE-PHASE	KOMPLETTE STEUERTAFEL DREHSTROM	COFFRET ÉLECTRIQUE TRIPHASÉ COMPLET	CUADRO ELÉCTRICO
B6655R		QUADRO 230/50M STR.SRM/09	ELECTRIC CONTROL BOX ASSEMBLY SINGLE-PHASE	KOMPLETTE STEUERTAFEL EINPHASENSTROM	COFFRET ÉLECTRIQUE MONOPHASÉ COMPLET	CUADRO ELÉCTRICO
B7246		MICROINTERRUT.SIC.10.5MT	MICROSWITCH	MIKROSCHALTER	CONTACT	MICROINTERRUPTOR
C0037		VITE TCEI M6X20 UNI 5931 ZB	SCREW TCEI 6X20	SCHRAUBE M6X20	VIS TCEI M6X20	TORNILLO TCEI M6X20
C0339		TUBO RILSAN 8X6 NERO	RILSAN HOSE D8X6	SCHLAUCH D.8X6	TUYAU RILSAN D.8X6	TUBO RILSAN Ø8X6
C0630		RONDELLA IN RAME Ø14X20	COPPER WASHER Ø14X20	MUTTER M10 UNI 5588	ECROU M10 UNI 5588	TUERCA
G120182		RONDELLA GROVER D 10 GAMMA	WASHER D10	SCHEIBE D10	RONDELLE D10	ARANDELA D10
R0068		SEEGER E30 UNI 7435	SNAP RING E30 UNI 7435	SEEGER E30 UNI 7435	ANNEAU DE FIXAGE E30 UNI 7435	SEEGER E30 UNI 7435
R0755		VITE TCEI 90° M8X90	SCREW TCEI 90° M8X90	SCHRAUBE TCEI 90° M8X80	VIS TCEI 90° M8X90	TORNILLO TCEI 90° M8X90
R0821		VITE FORATA DOPPIA 1/4	HOLED SCREW	SCHRAUBE	BOUCHON RENIFLARD	TORNILLO CON ORIFICIO
R0943	*	FUSIBILE 5X20 4A RITARDATO*	FUSE 5X20 4A*	SCHMELZSICHERUNG 5X20 4A*	FUSIBLE 5X20 4A*	FUSIBILE 5X20 4A*
R1194		SEEGER E11 UNI 7435	SEEGER RING E11 UNI 7435	SEEGER E11 UNI 7435	BAGUE E11 UNI 7435	SEEGER E11 UNI 7435
R1195		VITE TE M10X100 PF UNI 5737 ZB	SCREW TE M10X100 PF UNI 5737 ZB	SECHSKANTSCHRAUBE M10X100 PF UNI 5737 ZB	VIS TH M10X100 PF UNI 5737 ZB	TORNILLO M10X100 PF UNI 5737 ZB
S3525		BOCCOLA AUTOLUBR.25X28X30 SATU	SELF LUBRICATING BUSHING	SELBSTSCHMIERENDE BUCHSE	DOUILLE AUTOLUBRIFIANTE	CASQUILLO AUTOLUBRIC.
W26436B	*	FUSIBILE 16A 10X38	FUSE 16A 10X38	SCHMELZSICHERUNG 16A 10X38	FUSIBLE 16A 10X38	FUSIBILE 16A 10X38
Z_RICAMBI		* = RICAMBI CONSIGLIATI	* = RECOMMENDED SPARE PARTS	* = EMPFOHLENE E-TEILE	* = PIÈCES DE RECHANGE CONSEILLÉES	* = REPUESTOS ACONSEJADOS